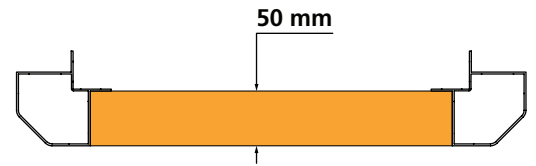


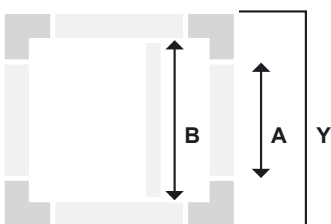
Standard system with nylon blunted corners

Panel thickness 50 mm
External dimension 70 mm



This is the first stage of evolution of the standard system. To meet the needs of the manufacturers, APS Arosio has changed some standard models by bevelling the external profile. The frames that may be obtained thus have a more compact shape. By using the standard assembly method, the assembly procedures remain unchanged.

Cutting conditions of the profiles



$$A = Y - 180 \text{ mm} / 7.08''$$

$$B = Y - 140 \text{ mm} / 5.51''$$

The formulas are valid for all sides of the module
Y = external dimension

Nylon accessories

TECHNICAL DATA

Panel thickness
50 mm / 1.95"

Material
PA6 + GF 20%

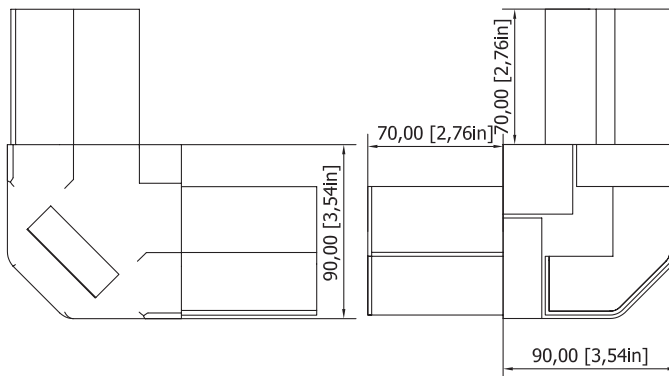
Color
Black

ASFG70-500

Main corner



Weight: **279 g**



Aluminium profiles

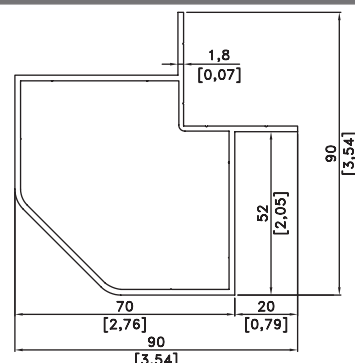
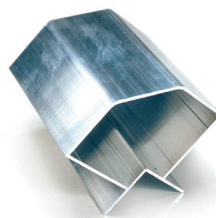
TECHNICAL DATA

Material
Extruded aluminium EN AW 6060

Treatment
T6

Color
RAL

PS170-50-0 Main profile

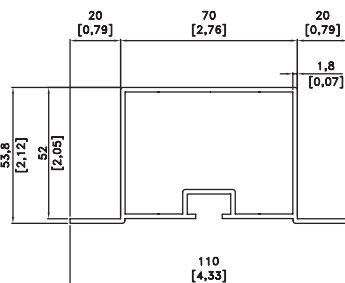


External dimension: **70 mm**

Panel thickness: **50 mm**

Weight: **1.610 kg/m**

P270-50000 Omega profile with channel

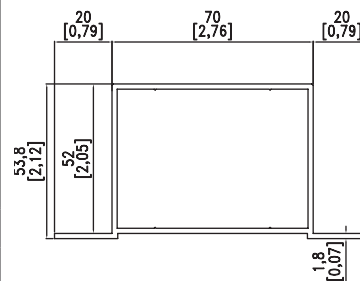
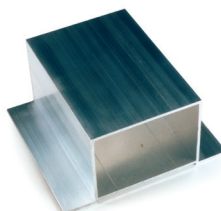


External dimension: **70 mm**

Panel thickness: **50 mm**

Weight: **1.510 kg/m**

P370-50000 Omega profile without channel



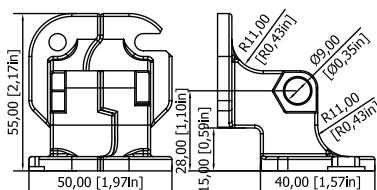
External dimension: **70 mm**

Panel thickness: **50 mm**

Weight: **1.420 kg/m**

Unit connection

GU-9000000 90° Unit connection



External dimension: **40 mm**

Material: **EN AB 46100**

Weight: **116 g**